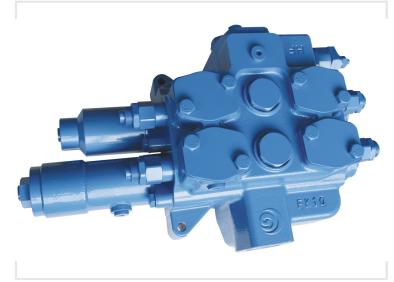


Monoblock Directional Control Valve

This monoblock directional control valve is available in 2- and 3-section configurations. It features inlet and outlet ports to simplify piping, along with safety, overload, and check valves.



Product Overview

High-Performance Monoblock Directional Control Valve

This monoblock directional control valve is engineered for demanding hydraulic systems, offering precise fluid flow control and reliable operation. Available in 2 or 3-section configurations, it features an integrated safety, overload, and check valve system for enhanced protection and easy maintenance. Designed with excellent flow characteristics and energy-saving capabilities, this valve is an ideal solution for heavy-duty machinery including loaders, bulldozers, and forestry equipment.

Technical Specifications

Parameters

Rated pressure (MPa)	25
Rated flow (L/min)	350 (maximum flow: 420 L/min)
Pressure range of main overflow valve (MPa)	10-25
Pressure range of secondary overflow valve (MPa)	15-31.5
Hydraulic oil	Mineral oil (HL, HLP) in accordance with DIN 51 524
Fluid temperature range (°C)	-20-100
Viscosity range (mm ² /s)	10-380
Fluid cleanliness	Not lower than GB/T 14039-93 level 19/16 or NAS 1638 level 10
Weight (kg)	50

Detailed technical specifications and operating parameters for the valve.

Rated Pressure	25 MPa
Rated Flow	350 L/min
Maximum Flow	420 L/min
Main Overflow Valve Pressure Range	10-25 MPa
Secondary Overflow Valve Pressure Range	15-31.5 MPa
Weight	50 kg

Fluid Requirements

Hydraulic Oil Type	Mineral oil (HL, HLP) in accordance with DIN 51 524
Fluid Temperature Range	-20 to 100 °C
Viscosity Range	10-380 mm ² /s
Required Fluid Cleanliness	GB/T 14039-93 level 19/16 or NAS 1638 level 10

Configuration & Features

Integrated Valve Types

Safety Valve • Overload Valve • Check Valve • Preload Valve • Regenerative Valve

Available Sections

2 Sections, 3 Sections

Applications

Suitable Applications

- Loader
- Bulldozer
- Agricultural machinery
- Material handling machinery
- Compactor
- Forestry machinery
- Container crane