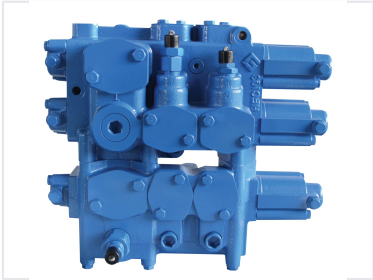
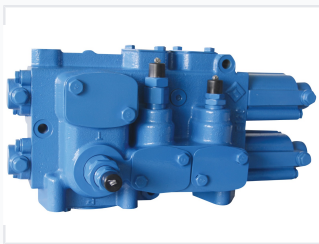


Monoblock Directional Control Valve

This monoblock directional control valve is available in 2- or 3-section configurations. The valve is equipped with safety, overload, and charge valves, making it suitable for a wide range of applications.



ADDITIONAL IMAGES



Overview

High-Performance Monoblock Directional Control Valve

The D32 Monoblock Directional Control Valve is engineered for precise fluid flow control in demanding hydraulic systems. It features a robust monoblock construction available in 2 or 3 sections, designed to handle high flow rates with low operating force thanks to its proportional pilot control. This valve is equipped with integrated safety, overload, and charge valves, making it a reliable choice for heavy-duty machinery requiring durable and easy-to-maintain hydraulic components.

Performance Metrics

Key Performance Metrics

350 L/min
Rated Flow

25 MPa
Rated Pressure

415 L/min
Max Flow

Technical Specifications

Parameters

Rated pressure (MPa)	25
Rated flow (L/min)	350 (maximum flow: 415 L/min)
Pressure range of main overflow valve (MPa)	10-25
Pressure range of secondary overflow valve (MPa)	15-31.5
Hydraulic oil	Mineral oil (HL, HLP) in accordance with DIN 51 524
Fluid temperature range (°C)	-20-100
Viscosity range (mm ² /s)	10-380
Fluid cleanliness	Not lower than GB/T 14039-93 level 19/16 or NAS 1638 level 10
Weight (kg)	D32: 57 D32A: 91

Detailed technical parameters including pressure ranges, flow rates, and fluid requirements for the D32 series.

Pressure Ranges

Component	Pressure Range (MPa)
Main Overflow Valve	10 - 25
Secondary Overflow Valve	15 - 31.5

Fluid & Operating Conditions

- Hydraulic Oil: Mineral oil (HL, HLP) per DIN 51 524
- Fluid Temperature: -20°C to 100°C
- Viscosity Range: 10-380 mm²/s
- Cleanliness: GB/T 14039-93 level 19/16 or NAS 1638 level 10

Design Features

Spool Configuration

- Smoothly polished surfaces for precise control
- 3 positions or 4 positions available
- Serial-parallel or serial loop connections

Applications

Recommended Applications

Loader, Bulldozer, Agricultural machinery, Material handling, Compactor, Forestry machinery, Container crane, Mining machinery, Continuous shearer bolter miners

Physical Properties

Weight

Model	Weight (kg)
D32	57
D32A	91