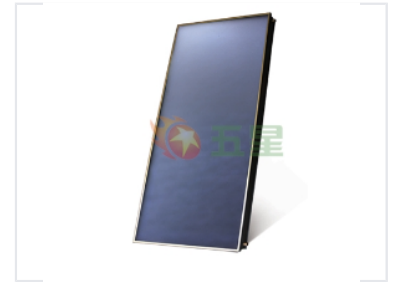


# Modular Flat-Plate Solar Collector

This high-efficiency flat-plate solar collector is designed for residential and commercial water heating. Its modular design allows for flexible installation and scalability to meet various water heating demands.



## Overview

### High-Efficiency Modular Solar Heating

The Dragon series of modular flat-plate collectors is engineered for both residential and commercial water heating applications. Its modular design allows for flexible installation and easy scalability to meet varying water heating demands. Constructed with durable materials, it ensures long-lasting performance and high resistance to environmental factors across various climates.

## Performance

### Key Performance Metrics

**100 %**

Absorber Optimization

## Design & Construction

### Design Features

- Modular design for flexible installation
- Scalable configuration
- Optimized absorber surface
- Durable material construction

<b>Collector Type</b>	Flat-plate solar collector
-----------------------	----------------------------

## Application

<b>Suitable Applications</b>	Residential Water Heating, Commercial Water Heating, Scalable Systems
<b>Environmental Suitability</b>	Suitable for various climates and environmental factors