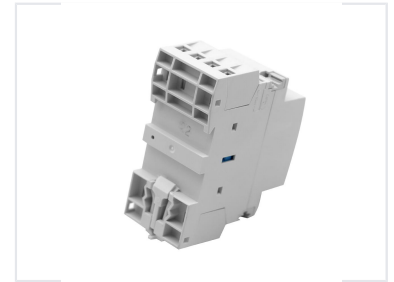


Modular AC Contactor 25A-100A, 24-440V Coil

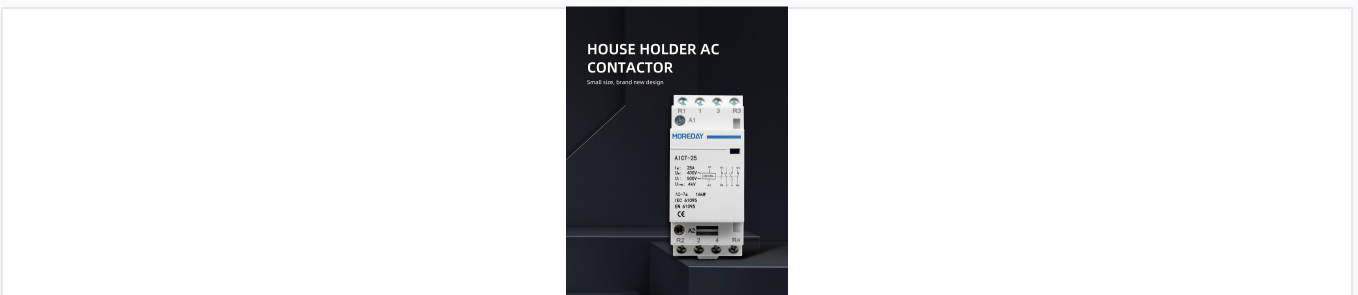
This modular AC contactor is designed for controlling low-inductance loads in residential and commercial buildings. It is suitable for switching and controlling lighting, heating, ventilation, and pumps.



ADDITIONAL IMAGES



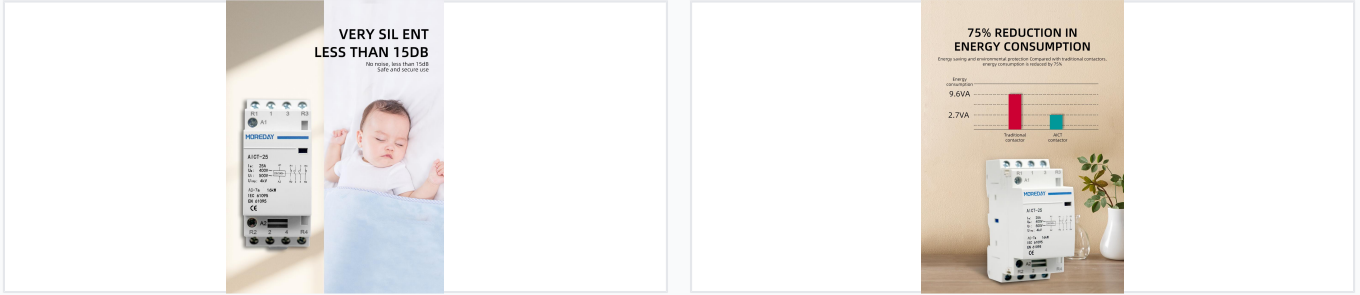
Product Overview



Versatile Modular AC Contactor

This modular AC contactor is designed for efficient switching and control of lighting, heating, ventilation, and pump systems in residential and commercial buildings. It supports a wide range of rated currents from 25A up to 100A and is compatible with various coil voltages from 24V to 440V. Engineered for easy integration, it features a compact DIN-rail mounting design that saves up to 70% space compared to traditional contactors.

Key Performance Metrics



Key Performance Metrics

25 A

Rated Current (Ie)

400 V

Operational Voltage (Ue)

15 dB

Operating Noise

4 kV

Impulse Withstand (Uimp)

Technical Specifications

Rated Insulation Voltage (Ui)	500 V
Frequency	50Hz, 60Hz
Utilization Category	AC-7a / AC-7b
Rated Power (AC-7a)	16 kW
Operating Temperature	-5°C to +60°C

Configuration Options

Supported Coil Voltages

- 24V
- 36V
- 48V
- 110V
- 230V/240V
- 440V

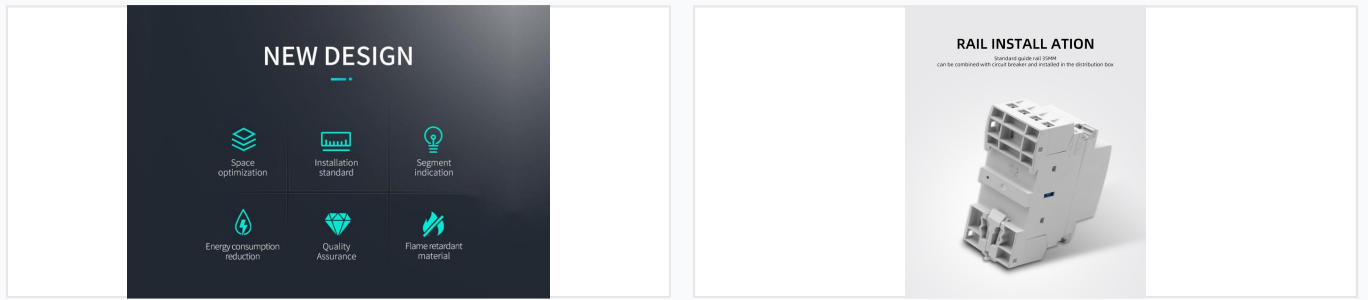
Available Rated Currents

- 16
- 20
- 25
- 32
- 40
- 63
- 100

Available Poles

1P, 2P, 3P, 4P

Installation & Design



Core Features

Space Optimization • Energy Saving • Flame Retardant • Silent Operation • Easy Wiring

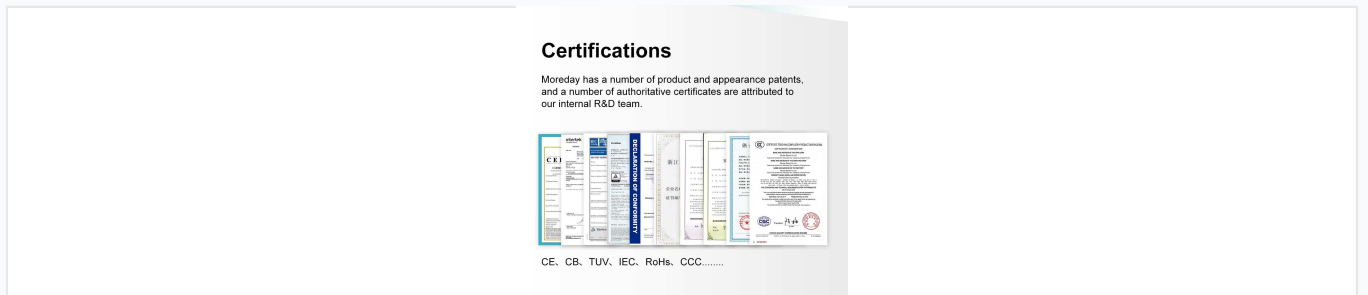
Physical Dimensions

Current Rating	Poles	Width (mm)	Height (mm)	Depth (mm)
16A/20A/25A	2P	18	81	68
16A/20A/25A	4P	36	81	68
32A/40A/63A	2P	36	85	68
32A/40A/63A	4P	54	85	68

Mounting Type

35mm DIN-Rail Mounting

Compliance & Quality



Product Certifications

CE • CB • TUV • RoHS • CCC

International Standards

IEC 61095, EN 61095, GB 17885