

# Miniature Circuit Breaker KNB2-63

The KNB2-63 miniature circuit breaker protects electrical circuits from overload and short circuits. It is rated up to 63A and 415V, suitable for use in AC 50/60Hz systems.



## ADDITIONAL IMAGES



## Overview

### High-Performance Miniature Circuit Breaker

The KNB2-63 is a high-breaking capacity miniature circuit breaker designed for reliable electrical circuit protection. It features a robust, user-friendly structure suitable for standard DIN rail installation in AC 50/60Hz electrical systems. Engineered for safety, it effectively prevents overload and short-circuit damage in various commercial and industrial applications.

## Electrical Ratings

### Rated Working Current

- 6
- 10
- 16
- 20
- 25
- 32
- 40
- 50
- 63

Rated Working Voltage 240V / 415V

Rated Frequency 50/60Hz

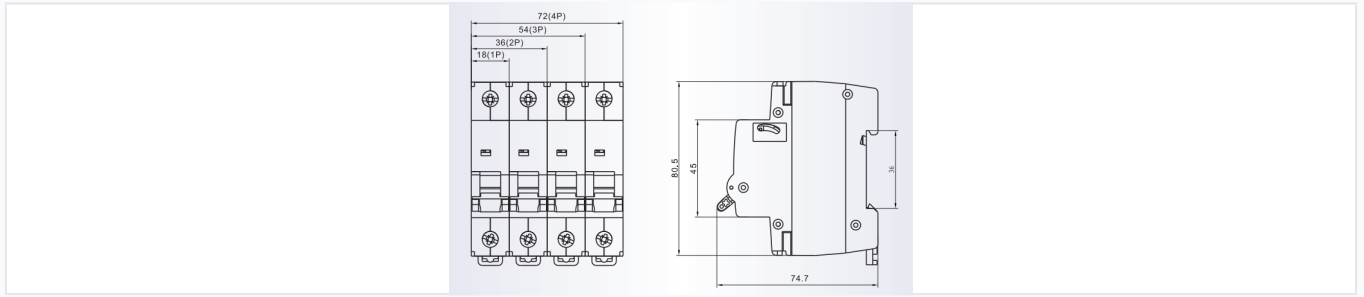
## Performance

Making and Breaking Capacity 6000 A

Mechanical Life 10000

Electrical Life 2000

## Design



Dimensional diagram for standard DIN rail installation.

Configuration	1P, 2P, 3P, 4P
Release Type	B, C, D

## Compliance

Standards Compliance	GB10963, IEC/EN60898
----------------------	----------------------

## Technical Data

### Tripping Characteristics (Type C)

Test Current	Start State	Time Limit	Result
1.13I <sub>n</sub>	Cold	d h	No Trip
1.45I <sub>n</sub>	After 1.13I <sub>n</sub> Test	< 1h	Trip
2.55I <sub>n</sub>	Cold	1s < t < 60s (d32A) / 120s (>32A)	Trip
5I <sub>n</sub>	Cold	d 0.4	No Trip
10I <sub>n</sub>	Cold	< 0.1s	Trip