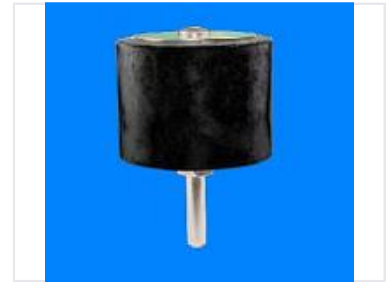


# Miniature Abrasive Cylinder Brush

Cylindrical brush with a durable, black abrasive material and metal stem. It is designed for cleaning and surface preparation when used with power tools.



## Product Overview

### Professional Miniature Abrasive Brush

The Miniature Abrasive Cylinder Brush is a precision-engineered tool designed for effective surface preparation and cleaning in confined, hard-to-reach areas. Featuring a durable black abrasive material and a robust metal stem, it integrates seamlessly with standard electric power tools. This versatile accessory is ideal for professional maintenance, deburring, and finishing tasks where compact size and abrasive performance are essential.

## Technical Specifications

Brush Shape	Cylindrical
Attachment Method	Metal stem
Compatibility	Electric power tools, Hand-held accessories

## Applications

### Primary Uses

- Surface preparation
- Deep cleaning
- Confined space maintenance
- Deburring