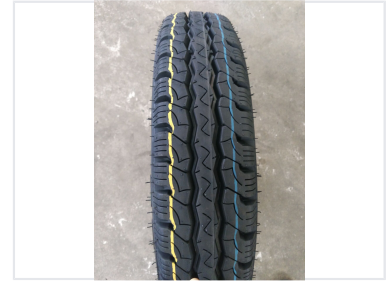


Mini Truck Tire

This mini truck tire features a robust tread pattern for excellent grip and handling in diverse conditions. Its construction provides long-lasting wear and puncture resistance, ensuring reliability for commercial vehicles.



Product Overview

High-Performance Mini Truck Tyre

This mini truck tyre is engineered for optimal performance and durability in commercial applications. Featuring a robust tread pattern, it provides excellent grip and handling across various road conditions. The reinforced sidewalls offer enhanced stability and superior load-carrying capacity, making it a reliable choice for light trucks and vans.

Performance Features

Vehicle Compatibility

- Light Trucks
- Vans
- Commercial Vehicles

Performance Highlights

100 %

Wear Resistance Rating

1 High

Load Capacity Class

Key Benefits

Overloading Capability, Super Wear Resistance, Reinforced Sidewalls, Enhanced Stability