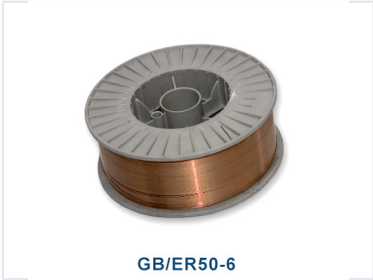


# Mild Steel Welding Wire

This mild steel welding wire is designed for single and multi-pass welding. The copper coating ensures arc stability and provides corrosion resistance.



## Product Overview

### GB/ER50-6 Mild Steel Welding Wire

The GB/ER50-6 is a high-quality mild steel welding wire engineered for both single and multi-pass welding applications. Featuring a specialized copper coating, this wire ensures superior arc stability and enhanced corrosion resistance during operation. It is an ideal solution for professionals working in general fabrication, automotive repair, and structural welding environments.

## Technical Specifications

Grade Standard	GB/ER50-6
Compatible Process	GMAW (Gas Metal Arc Welding)
Surface Coating	Copper Coated

## Applications

Key Applications	General Fabrication, Automotive Repair, Structural Welding
------------------	--

## Key Features

### Performance Highlights

**1 High**

Arc Stability

**1 Enhanced**

Corrosion Resistance