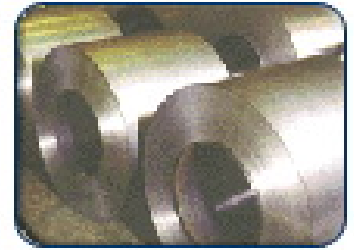


Metallurgy Machinery Parts

Heavy-duty metal components are designed for demanding applications in metallurgy. Precision manufacturing ensures optimal performance and longevity, contributing to efficient and reliable operation of machinery used in mining and rock drilling.



Product Overview

High-Performance Metallurgy Components

These heavy-duty metal components are specifically engineered for demanding applications within the metallurgy sector. Designed to withstand extreme temperatures, high pressures, and corrosive environments, they ensure reliable and efficient operation for machinery used in mining and rock drilling. Their precision manufacturing guarantees optimal performance and extended service life in harsh industrial conditions.

Technical Specifications

Durability Features

- High-temperature resistance
- High-pressure tolerance
- Corrosion resistance
- Precision manufacturing

Primary Applications

Metallurgy, Mining, Rock Drilling

Performance Metrics

Operational Suitability

1 High

Performance Rating

1 Extreme

Environment Suitability