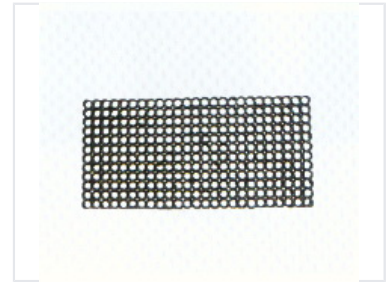


# Metal Mesh Screen with Circular Openings

This metal mesh screen is suitable for filtration, sifting, or protective covering. It features a regular grid pattern of circular openings.



## Product Overview

### High-Performance Metal Mesh Screen

This metal mesh screen features a precision-engineered grid of circular openings, designed for consistent performance in industrial filtration and sifting applications. Constructed from durable, dark-finished metal, this screen provides reliable structural integrity and efficient flow control. It is an ideal solution for professionals seeking a robust protective covering or separation medium in demanding environments.

## Physical Characteristics

Material	Industrial Metal (Steel/Aluminum)
Opening Pattern	Circular Grid
Form Factor	Rectangular Sheet

## Application & Usage

### Industrial Standards

Industrial Grade • Durable

Primary Applications	Filtration, Sifting, Protective Covering, Industrial Separation
----------------------	---