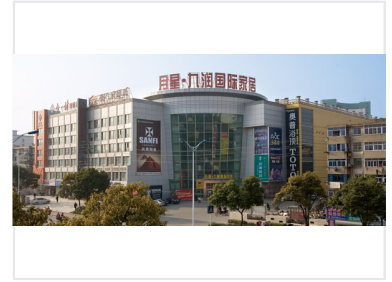


# Metal Cutting Machine Tool

This machine tool is used for cutting metal materials to specific dimensions. It provides precise and efficient cutting for a variety of industrial applications.



## Overview

### Professional Metal Cutting Solution

This high-performance metal cutting machine tool is engineered for precision and durability in industrial environments. Designed to handle demanding cutting tasks, it offers reliable operation and consistent results for various metalworking applications. Its robust construction ensures stability during intensive use, making it a dependable asset for manufacturing and fabrication facilities.

## Key Metrics

### Performance Metrics

**100 %**

Duty Cycle

**5000 RPM**

Max RPM

## Capabilities

### Compatible Materials

Carbon Steel, Stainless Steel, Aluminum, Copper

## Compliance

### Certifications

ISO 9001 • CE Certified