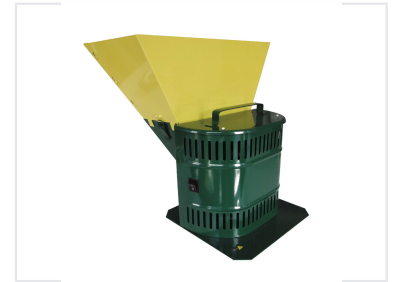


# Material Grinding Crusher

This grinding crusher is a robust and efficient machine designed for processing various materials. Its durable construction includes a yellow hopper for easy feeding, a green body with ventilation slots, an integrated switch, and a sturdy base.



## Overview

### Robust Material Grinding Solution

The Material Grinding Crusher is a reliable and efficient machine engineered for processing a variety of materials. Built with a durable metal construction, it features a yellow hopper for streamlined material feeding and a green body equipped with ventilation slots to ensure effective motor cooling during operation. Designed for stability and ease of use, this crusher is suitable for both professional and home applications.

## Design & Construction

Construction Material	Durable metal
Color Scheme	Yellow hopper, Green body
Cooling System	Yes

## Operational Features

Application Suitability Professional Use • Home Use	
Control	Integrated switch