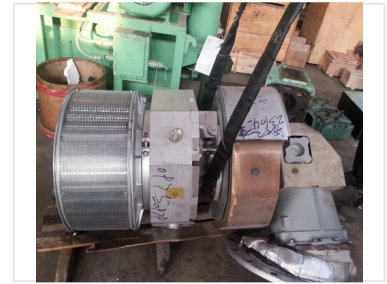


Marine Turbocharger for ABB Engines

This marine turbocharger is designed for ABB engine applications, ensuring optimal performance and reliability. It features a high-efficiency compressor and turbine for efficient energy conversion and reduced fuel consumption.



Product Overview

High-Performance Marine Turbocharger

This new stock marine turbocharger is engineered for reliable performance in demanding marine propulsion environments. Designed for compatibility with high-capacity engine systems, it incorporates a high-efficiency compressor and turbine to maximize energy conversion. Its robust construction ensures longevity and optimal fuel economy for vessel operation.

Technical Specifications

Operational Limits

Component	Maximum Value
T-Max	630
B-Max	600
N-Max	741

Model Identifier A140-M65

Year of Manufacture 2011

Condition and Compliance

Condition

New Stock • Good Condition

Available Quantity 1 set