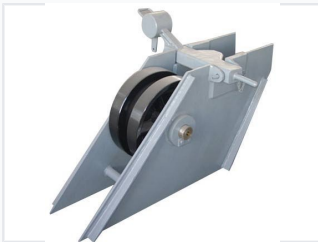


# Marine Roller Chain Stopper

This roller chain stopper is designed for marine applications. It provides a secure and reliable method for anchoring chains, with a roller mechanism that facilitates smooth chain movement and reduces wear.



## ADDITIONAL IMAGES



## Product Overview

### Marine Roller Chain Stopper

This marine roller chain stopper is engineered for secure anchoring and efficient chain management on vessels. Constructed from high-quality steel, it features a robust roller mechanism that facilitates smooth chain movement while minimizing wear during deployment and retrieval. Designed to withstand harsh marine environments, this critical deck hardware ensures reliable performance and safety for various vessel types.

## Technical Specifications

Model Number	CB/T 3844-2000
Weight Range	1053 - 5443 kg
Material	Steel

## Compliance & Quality

Certifications	BV, CCS, ABS, GL, LR, DNV
----------------	---------------------------

## Logistics & Supply

### Production Capacity

**1000 Pieces**

Monthly Capacity

Delivery Lead Time	30 days after order
Packaging	Iron Frame