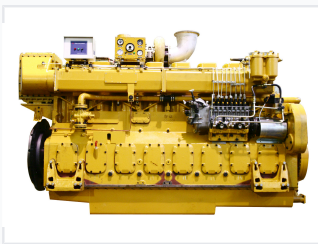


Marine Diesel Engine for Propulsion and Power Generation

This marine diesel engine is designed for both propulsion and auxiliary power generation in marine environments. Its features include a high-pressure fuel injection system, turbocharger, and advanced monitoring systems.



ADDITIONAL IMAGES



Overview

High-Performance Marine Propulsion & Power

The 190 Series Marine Engine is a robust diesel power solution engineered for both propulsion and auxiliary power generation in demanding maritime environments. Featuring a heavy-duty modular design, it ensures exceptional reliability and longevity for tugboats, fishing vessels, and offshore support craft. Its advanced high-pressure fuel injection and turbocharging systems deliver optimized combustion efficiency and high power output.

Performance Metrics

Key Performance Metrics

190 mm

Series Class

16 V

Cylinder Config

Technical Features

Engine Configuration

- Multi-cylinder V-type configuration (V16/V20)
- High-pressure fuel injection system
- Turbocharged induction
- Advanced cooling system for thermal stability
- Sophisticated monitoring and control systems

Core Components

Turbocharger, Fuel Injection, Cooling System, Diagnostic Module

Applications

Suitable Applications

Tugboats • Fishing Vessels • Offshore Support Vessels • Engineering Vessels • Auxiliary Power Generation

Operation & Maintenance

Maintenance & Reliability

- Modular design for simplified servicing
- Real-time performance data and diagnostics
- Durable construction for heavy-load environments
- Reduced emissions through advanced combustion technology