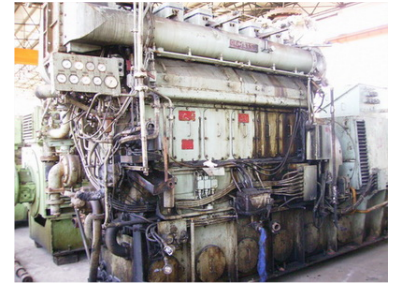


Marine Diesel Engine 900PS 720RPM

This robust diesel engine is designed for marine applications. It is a four-stroke, direct injection engine equipped with a control panel for monitoring performance parameters.



Overview

Robust Marine Propulsion

The 6DLB-22 is a robust and powerful diesel engine designed specifically for demanding marine applications. Featuring heavy-duty construction, this four-stroke, direct-injection engine is engineered for reliable operation in harsh environments. With liquid cooling and turbocharging, it offers enhanced efficiency, making it an ideal choice for ship propulsion and power generation needs.

Performance Metrics

Rated Power

900 PS

Power

720 RPM

Rated Speed

Technical Specifications

Model	6DLB-22
Bore	220 mm
Engine Configuration	4-Stroke, Direct Injection, Liquid-Cooled, Turbocharged

Availability

Engine Serial Numbers

- DL622661
- DL622662
- DL622663

Available Quantity	3 sets
Year of Manufacture	1992