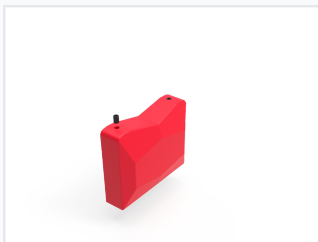


# Manual Tile Cutter

This manual tile cutter is designed for precise and efficient cutting of ceramic, porcelain, and other types of tiles. It features a robust construction with a high-leverage handle for scoring and snapping tiles up to a specified thickness and length.



## ADDITIONAL IMAGES



## Product Overview

### Manual Tile Cutter for Precision Projects

This manual tile cutter is engineered for efficient and accurate cutting of ceramic and porcelain tiles. Featuring a robust aluminum base and a hard chrome sliding bar, the tool ensures both longevity and high-precision performance. With a convenient automatic flipping breaker and an ergonomic handle, this cutter is designed for smooth operation and professional-grade results in any tiling project.

## Technical Specifications

Maximum Cutting Length	600 mm
Maximum Cutting Depth	14 mm
Diagonal Cut Capacity	420 x 420 mm

## Key Features

### Operational Highlights

- Automatic flipping breaker
- Ball bearing precision mechanism
- Visible blade design
- Comfortable bent handle
- Portable bag included

### Performance Metrics

**600 mm**  
Cut Length

**14 mm**  
Cut Depth

### Construction Materials

Aluminum Base, Hard Chrome Sliding Bar