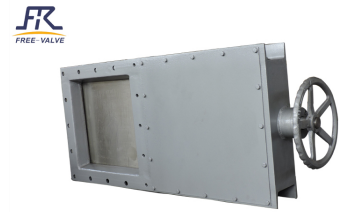


# Manual Square Port Knife Gate Valve

This knife gate valve features a square port and is operated manually. The valve is constructed from carbon steel and designed for industrial applications requiring reliable shut-off and flow control.



## ADDITIONAL IMAGES



## Product Overview

### Manual Square Port Knife Gate Valve

This manual square port knife gate valve is designed for reliable flow control and shut-off in demanding industrial pipelines. Featuring a durable square board opening and closing element, it efficiently manages powders, grains, and small particle materials. Its robust construction makes it an ideal solution for industries such as metallurgy, mining, power, and chemical processing.

## Technical Specifications

### Applicable Temperature

**0 °C**

Min Temp

**120 °C**

Max Temp

### Size Range

DN200xDN200 to DN1200xDN1200

### Pressure Range

Class 150, PN6, PN10

## Construction & Materials

### Body Material

- Carbon steel
- Stainless steel

### Disc Material

- Stainless steel
- Carbon steel

### Sealing Material

- Rubber
- Metal seal

## Operational Details

### Operating Mode

Hand wheel • Bevel Gear • Pneumatic

### Connection Type

Square flange

### Model

FRZ341H