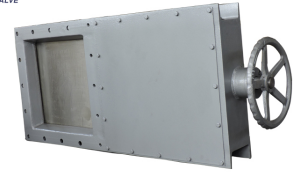


# Manual Square Knife Gate Valve

This manual square knife gate valve is designed for on-off operation in industrial pipelines. It features a fabricated square or rectangular port for handling fluids with high solid content, mainly used in bulk handling and silo outlet applications.



## Product Overview

### Manual Square Knife Gate Valve

This square knife gate valve is engineered for efficient flow control of powders, grains, and small particle materials. Featuring a robust rectangular body and gate design, it offers reliable shut-off capabilities for demanding industrial sectors including metallurgy, mining, and chemical processing. The valve supports multiple actuation methods and is built with durable materials to ensure long-term performance in harsh operating environments.

## Technical Specifications

### Operating Temperature

**0 °C**

Min Temp

**120 °C**

Max Temp

<b>Size Range</b>	DN200xDN200 to DN1200xDN1200
<b>Pressure Ratings</b>	Class 150, PN6, PN10
<b>Connection Type</b>	Square flange

## Materials

### Body Material

- Carbon steel
- Stainless steel

### Disc Material

- Stainless steel
- Carbon steel

### Sealing Material

- Rubber
- Metal seal

## Operations

### Operating Modes

Hand wheel • Bevel Gear • Pneumatic • Electric

<b>Stem Type</b>	Rising stem
------------------	-------------

## Applications

Suitable Industries

Metallurgy, Mining, Building Materials, Food Processing, Chemical