

# Manual Brake Valve for Dump Trucks

This manual brake valve is designed for use in dump trucks, controlling the parking and emergency brake systems. It features a lever-actuated mechanism for precise control and reliable performance.



## Product Overview

### Manual Brake Valve for Heavy Duty Applications

The PDF18-00 manual brake valve is a robust, lever-actuated component designed specifically for dump trucks operating in demanding opencast mining environments. It provides precise control for the application and release of emergency or parking brake systems. Engineered for durability and high reliability, this valve ensures safety and consistent performance under harsh industrial conditions.

## Technical Performance

### Технические характеристики

Давление впуска масла	20МПа
Номинальный расход	25л/мин
Давление слива	≤0.5МПа
Пределы вязкости	10-380 мм <sup>2</sup> /с
Предел температуры масла	-20°C--100°C
Чистота масла	Не ниже GB/T 14039-2002 класса 19/16 или NAS 1638 класса 10
Масса	1.8кг

Summary of primary hydraulic and performance specifications.

### Performance Metrics

**20 MPa**

Inlet Pressure

**25 L/min**

Nominal Flow Rate

**1.8 kg**

Weight

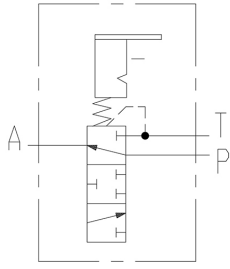
### Operating Conditions

- Viscosity Range: 10-380 mm<sup>2</sup>/s
- Temperature Range: -20°C to 100°C
- Cleanliness Standard: GB/T 14039-2002 class 19/16 or NAS 1638 class 10

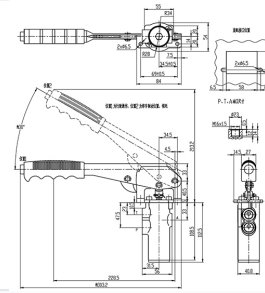
Drain Pressure

0.5 MPa

## Interface and Schematic



Internal hydraulic schematic demonstrating the 4-way, 2-position valve mechanism.



Dimensional blueprint including mounting interfaces and hydraulic port locations.

### Mounting and Thread Details

Feature	Dimension/Value
Thread Size	M16x1.5
Mounting Hole	2x6.5mm
Lever Movement	Defined Operation/Brake Positions

### Port Configuration

A Port, P Port, T Port