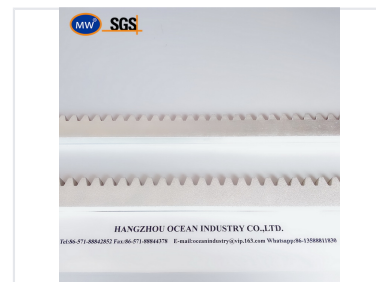


M4 22 x 22 x 1005 mm Gear Rack for Sliding Door Motors

This gear rack features an M4 module and measures 22 x 22 x 1005 mm. It is designed for use in automatic sliding door systems.



ADDITIONAL IMAGES



Overview

High-Precision Gear Rack System

This high-precision gear rack is engineered for automatic sliding door motors and industrial automation systems. Designed with a standard M4 module, it ensures smooth and reliable linear motion control for demanding environments. Available in various durable materials, this component is suitable for both commercial and industrial applications, with customization options available to meet specific technical drawings or sample requirements.

Technical Specifications

Dimensions

22 mm

Width

22 mm

Height

1005 mm

Length

Module

M4

Available Materials

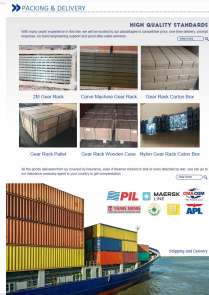
A3 Steel, 45# Steel, Stainless Steel, Nylon with Metal Core

Compatibility & Applications

Primary Applications

- Automatic Sliding Doors
- Sliding Gates
- CNC Machinery
- Industrial Automation
- Elevator Systems

Packaging & Logistics



Secure packaging standards ensure product integrity during international transit.

Included Hardware

- Bolts
- Nuts
- Washers

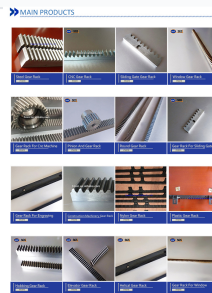
Packaging Standard

4 pieces per carton, 125 cartons per steel pallet

Shipping Insurance

Yes

Available Sizes



Diverse range of gear rack profiles available for different industrial needs.

Standard Sizes

Module	Dimensions (mm)
M1	15x15x1000
M1.5	17x17x1000
M2	20x20x1000
M2.5	25x25x1000
M3	30x30x1000
M4	40x40x1000
M5	50x50x1000
M6	60x60x1000
M8	80x80x1000