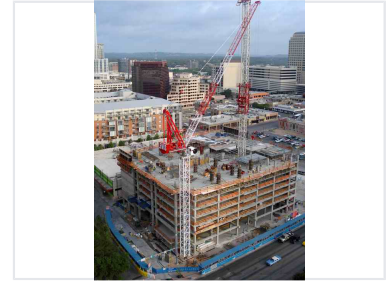


Luffing Tower Crane

This luffing crane has a small tail slewing radius and compact counterjib. The STL230 is suitable for work sites with groups of tower cranes or crowded buildings.



Overview

High-Performance Luffing Tower Crane

This luffing tower crane is engineered for complex construction sites and high-rise development projects where space is at a premium. With a maximum lifting moment of 288t.m and a maximum radius of 55 meters, it provides exceptional reach and load management. Its versatile installation options, including stationary and inner climbing configurations, ensure adaptability across diverse project requirements.

Performance Metrics

Lifting Capacity

18 t

Max Capacity

288 t.m

Max Lifting Moment

55 m

Max Working Radius

Technical Specifications

Mast Section Dimensions

- 2.3 x 2.3 x 6.0m
- 2.0 x 2.0 x 3.0m

Gauge Alternatives

- 6.0m
- 8.0m

Max Free Standing Height

78.4 m

Installation Options

Installation Types

Stationary, Travelling, Inner climbing, Gantry, Anchorage