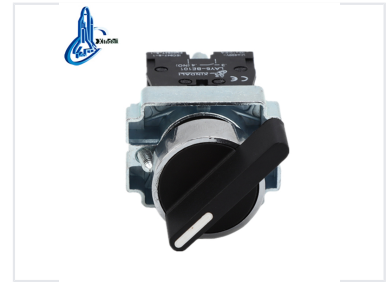


# Long Handle 3-Position Pushbutton Switch

This pushbutton switch features a long handle and three positions for versatile control. It is designed for use in electrical systems requiring reliable switching.



## ADDITIONAL IMAGES



## Product Overview

### Industrial 3-Position Selector Switch

This robust 3-position selector switch features a long handle design for enhanced leverage and precise manual control. Engineered for demanding industrial environments, it utilizes a high-grade anti-flam plastic and zinc alloy construction with silver alloy contacts for superior electrical erosion resistance. It is fully compliant with international safety standards including IEC60947-5-1 and CE, making it a reliable solution for control panels, machinery, and power distribution systems.

## Technical Specifications



Specializing in production of buttons and indicators since 1997

Detailed view of the contact configuration, showing terminal labeling for easy electrical integration.

### Operational Metrics Table

Parameter	Value
Lamp Brightness	60cd/m <sup>2</sup>
Continuous Working Life	100,000h
Switch Positions	3

Rated Insulation Voltage 600 V

Conventional Heating Current 10 A

Insulation Resistance e5M $\Omega$

Contact Resistance d25m $\Omega$

PF Withstand Voltage AC 2.5KV/min

Voltage Wave Tolerance  $\pm 20\%$

## Durability & Lifecycle

### Mechanical Life

**500000 cycles**

Selector Switch Cycles

### Electrical Life

**250000 cycles**

Selector Switch Cycles

## Physical Dimensions

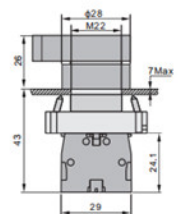


LAY5-BJ33

Long handle

N/O+N/O  3 Position stay put LAY5-BJ33

N/O+N/O  3 Position spring return LAY5-BJ53



Dimensional drawing for the M22 mounting standard, illustrating the 3-position selector mechanism.

Mounting Hole Diameter 22 mm

Maximum Panel Thickness 7 mm

## Compliance & Certification

### Certifications

CE, ISO 9001, RoHS, UL, IEC60947-5-1