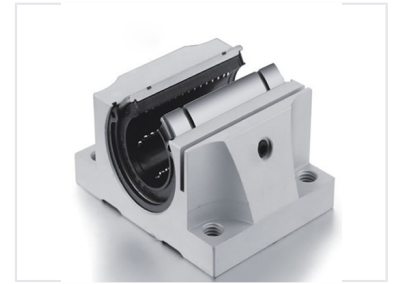


Linear Motion Bearing

This linear motion bearing is precision-engineered for smooth, accurate movement. It offers low friction and high load capacity due to its robust housing and recirculating ball bearings.



Product Overview

Precision Linear Motion

The TBR type Asian standard linear motion bearing is a precision-engineered component designed for smooth and accurate linear movement. Featuring a robust housing and high-quality recirculating ball bearings, this bearing provides low friction and high load capacity. It is ideal for use in a variety of industrial automation, CNC machinery, and other linear motion applications.

Standard Compliance	Asian Standard
----------------------------	----------------

Technical Features

Common Applications

- Industrial Automation
- CNC Machinery
- Linear Motion Systems

Key Features	Low Friction, High Load Capacity, Precision Engineered, Easy Integration
---------------------	--