

Light Keel Roll Forming Machine

This light keel roll forming machine produces light gauge steel profiles. It operates at a speed of 40 meters per minute, ensuring high throughput.



ADDITIONAL IMAGES



Overview

High-Efficiency Light Keel Production

This light keel roll forming machine is engineered for high-speed, automated production of light gauge steel profiles, achieving an impressive output speed of up to 45 meters per minute. Designed for versatility, it supports the manufacturing of various structural components including L-angles, Omega channels, CU channels, and furring profiles. Built for precision and durability, this system is an ideal solution for high-volume construction and interior finishing applications.

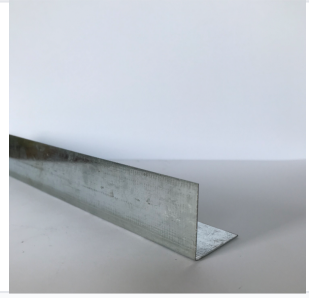
Performance Metrics

Production Speed

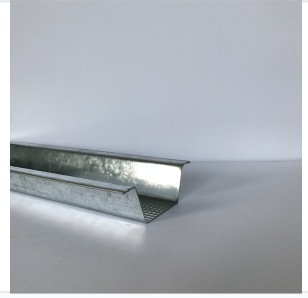
45 m/min
Standard Speed

25 m/min
Punching Speed

Technical Specifications



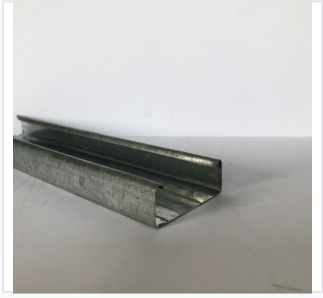
Example of L-angle profile produced by the machine.



Example of Omega profile produced by the machine.



Example of CU channel profile produced by the machine.



Example of 50 furring profile produced by the machine.

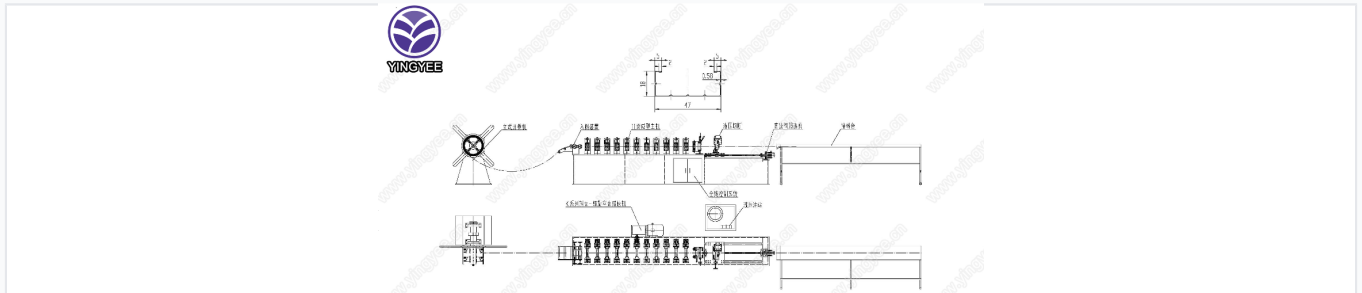
Supported Profiles

- L angle
- Omega
- CU channel
- 38 furring
- 50 furring

Compatible Materials

Galvanized strip

Machine Components



Technical process flow illustration of the roll forming system, including decoiling, forming, and cutting stages.

System Components

- Decoiler
- Feeding device
- Multi-stand roll forming unit
- Hydraulic cutting system
- Run-out table