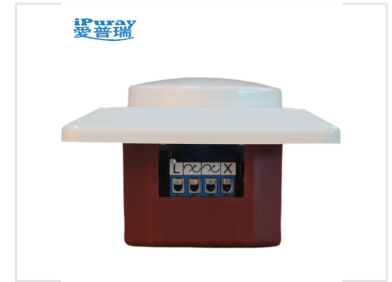


LED Dimmer Switch with Rotary Knob

This LED dimming switch is controlled by a micro controller unit and utilizes proprietary adaptive dimming technology to eliminate flickering and achieve maximum dimming range. It is designed for easy installation and retrofit, directly fitting into a standard wall box without the need for a neutral wire.



ADDITIONAL IMAGES



Product Overview

Advanced Adaptive LED Dimming

The BRT-D204 is a high-performance LED dimmer switch utilizing proprietary adaptive technology to eliminate flickering and provide an expansive dimming range. Designed for easy retrofitting, it fits standard wall boxes without requiring a neutral wire, making it an ideal choice for both residential and commercial upgrades. The dual-function push button and rotary knob interface offers intuitive control with a built-in memory function to preserve your preferred lighting levels.

Technical Performance

Dimming Technology

Trailing Edge • Adaptive Adjustment • Flicker-Free

Key Features

- Memory function preserves last brightness setting
- Two-in-one push button and rotary knob operation
- Single-pole or three-way (multi-location) wiring support
- Fine and Coarse adjustment potentiometers for minimum brightness calibration

Physical Construction



Detailed technical specifications including dimensions (84x84x33mm) and calibration instructions for flicker-free performance.

Dimensions

84 mm

Width

84 mm

Height

33 mm

Depth

Material

ABS-V0 Flame Resistance Material

Design Series

Classical 86 Series

Installation & Compatibility

Installation Type

Flush mounting, no neutral wire required

Junction Box Compatibility

Standard European Junction Box

Compatible Load Types

LED Lights, LED Bars, Dimmable LED Bulbs

Compliance

Certifications

CE