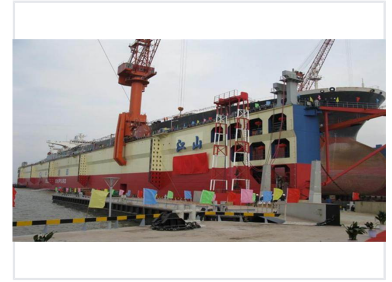


Large Vessel Floating Dock

Floating docks provide a stable platform for large vessels. They are used during construction, maintenance, and repair operations.



Product Overview

Heavy-Duty Floating Dock Solution

This large-scale floating dock is engineered for the construction, maintenance, and repair of major maritime vessels. Featuring a robust multi-level structure, it provides essential access points and support systems necessary for complex shipyard operations. Its design integrates heavy-duty lifting capabilities, making it a reliable infrastructure asset for large vessel servicing.

Technical Specifications

Color Scheme

- Red
- Cream
- Blue

Construction Type

Multi-level floating dock

Primary Application

Vessel Construction, Vessel Repair, Maritime Maintenance