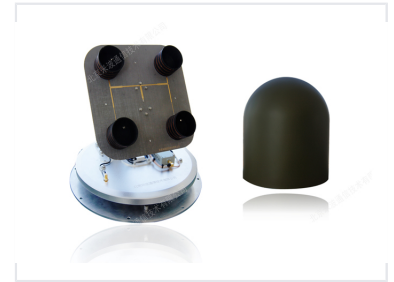


L-Band Auto-Tracking Satellite Antenna with Radome

This antenna is designed for reliable satellite communication and features an auto-tracking system to maintain optimal signal strength. Operating in the L-band frequency range, it is suitable for maritime communications, remote sensing, and mobile satellite services and includes a radome for environmental protection.



Overview

High-Performance Satellite Connectivity

The L-Band Auto-Tracking Satellite Antenna is engineered for reliable communication in dynamic environments. Featuring an advanced auto-tracking system, it maintains optimal signal strength by automatically adjusting its position, even while in motion. Protected by a durable radome, this system is ideal for maritime communications, remote sensing, and mobile satellite services.

Technical Specifications

Protection

Radome Enclosed • Weather Resistant

Frequency Band

L-Band

Tracking Capability

Yes

Applications

Primary Applications

- Maritime Communications
- Remote Sensing
- Mobile Satellite Services