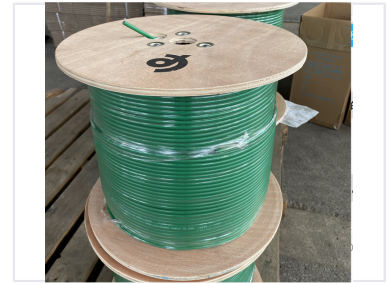


KX6+2CORE Coaxial Cable

This coaxial cable is a KX6+2CORE type, designed for reliable signal transmission. It is suitable for various communication applications, ensuring optimal performance and durability.



Overview

High-Performance Coaxial Solution

The KX6+2CORE Coaxial Cable is engineered for reliable signal transmission in CCTV and CATV applications. Featuring a robust construction with a solid PE dielectric and a protective PVC jacket, it ensures signal integrity and durability for both residential and commercial installations. This cable is designed to withstand environmental factors, making it an ideal choice for long-distance communication setups.

Technical Specifications

Inner Conductor	0.2 x 7 Copper
Dielectric	3.7 ± 0.10mm Solid PE
Outer Conductor	4.0mm (96 x 0.12mm Copper Clad Aluminum)
2CORE Power Specs	0.8mm CCA + 2.0mm PE
Jacket Dimensions	6.1 + 5.0mm PVC (Green)

Logistics

Available Lengths

- 100m
- 1000m

Packing Methods

Roll, Wooden Drum, Pallet

Key Metrics

Impedance

75 Ohm

Impedance