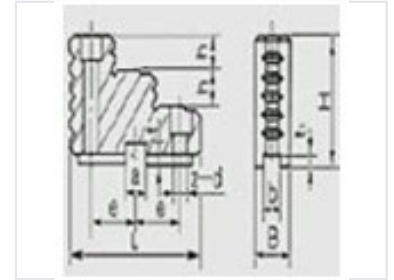


# K11 Three-Jaw Self-Centering Chuck Jaws

These are precision-engineered K11 three-jaw self-centering chuck jaws designed for secure workpiece holding. The jaws are manufactured to exacting standards, ensuring optimal performance and longevity.



## Product Overview

### Precision Workpiece Holding

These K11 three-jaw self-centering chuck jaws are engineered for secure and accurate workpiece holding in demanding machining environments. Constructed from hardened steel, they offer superior durability and wear resistance for consistent, long-term performance. The precision-ground surfaces ensure repeatable clamping accuracy, making them an ideal choice for lathes, milling machines, and various industrial machine tools.

## Technical Specifications

### Suitable Applications

- Lathes
- Milling Machines
- General Machining Tools

### Compatibility

Standard K11 chuck bodies

### Material

Hardened Steel

### Jaw Configuration

Three-Jaw Self-Centering

### Key Features

Hardened Steel, Precision Ground, Self-Centering, Wear Resistant