

# Join-Hidden Steel Roof Panel Forming Machine

This steel roof panel forming machine creates panels with a unique join-hidden design for large-span roofs. The machine forms durable and aesthetically pleasing roofing solutions for various industrial and commercial applications.



## ADDITIONAL IMAGES



## Overview

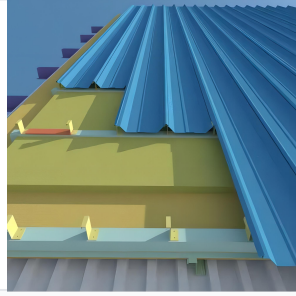


Robust design for large-span roof panel production.

### High-Efficiency Roof Panel Production

This automated roll forming machine is engineered for the precise manufacturing of joint-hidden steel roof panels, ideal for large-span industrial and commercial roofing projects. The system integrates manual decoiling, roll forming, and post-cutting processes to deliver consistent, high-quality panels. Designed for durability and ease of operation, it provides a robust solution for creating weather-resistant, aesthetically pleasing roofing systems with concealed joints.

## Technical Specifications



Precision metal forming for concealed joint systems.

Production Speed	10 m/min
Roller Stands	17 rows
Main Power	3 kW
Hydraulic Pump Power	3 kW
Machine Side Panel Thickness	14 mm
Main Frame	350H Steel

## Electrical & Control



Automated system with user-friendly controls.

Power Supply	380V/50Hz/3phases
Control System	PLC Control

## Materials & Components

Suitable Material	Color Steel Plate
Roller Material	Carbon Steel 45#
Blade Material	Cr12 with quenched treatment (60-62 )

## Included Components

### Included Units

- Manual decoiler
- Main roll forming machine
- Post-cut system
- Hydraulic system
- PLC control system
- Stacking unit