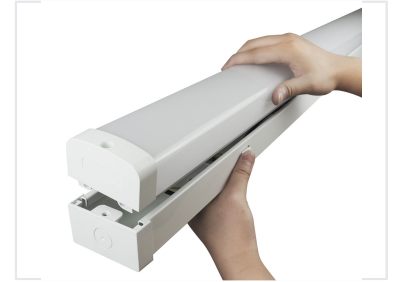


IP20 LED Batten with Opal Cover

This IP20 LED batten fitting features a PC opal cover and an iron base. The LED light bar is placed in the lampshade, which protects the LED lamp beads.



ADDITIONAL IMAGES



Product Overview

Professional Indoor LED Batten

This IP20-rated LED batten fitting features a durable iron base and a high-quality PC opal cover, designed to provide uniform and efficient illumination for commercial and industrial environments. Engineered for the UK and Australian markets, it offers a user-friendly design with a unique sliding mechanism for easy installation and maintenance. With a high efficacy of 100lm/W and versatile customization options, it is a reliable solution for various indoor lighting applications.

Technical Specifications

Luminous Efficacy

100 lm/W
Efficacy

IP Rating

IP20

Construction Materials

Iron Base, PC Opal Cover

Features & Customization

Available Add-ons

- Emergency lighting kit
- Microwave motion sensor
- DALI dimming control
- Customizable CCT

Compliance & Warranty

Certifications

CE • CB • ERP • GS

Warranty

3 years

Market Compatibility

Target Markets

UK, Australia