

# Integrated Multiple Directional Hydraulic Valve

This integrated multi-way valve features a 2-slice design, expandable to 3 slices. The valve element utilizes fine-tuned grooves for progressive flow control, offering a wide flow rate and reduced commutation maneuverability with proportional pilot control.



## Overview

### High-Performance Integrated Hydraulic Control

The D32 series is a versatile integrated multi-way directional valve designed specifically for heavy-duty machinery like loaders and bulldozers. It features a modular 2-slice design that is expandable to 3 slices, offering exceptional flexibility for various hydraulic circuit requirements. With proportional pilot control and fine-tuned grooves, this valve ensures precise flow management and smooth maneuverability in demanding construction and agricultural environments.

## Technical Performance

### Key Performance Metrics

**25 MPa**

Rated Pressure

**350 L/min**

Rated Flow

**415 L/min**

Max Flow

### Pressure Regulation Ranges

Component	Range (MPa)
Main Overflow Valve	10 ~ 25
Secondary Overflow Valve	15 ~ 31.5

### Loop Configuration

Series Parallel, Parallel

## Fluid Specifications

### Cleanliness Standards

- GB/T 14039-93 19/16
- NAS 1638 Level 9

### Recommended Fluid

Mineral oil (HL, HLP) in accordance with DIN 51 524

### Oil Temperature Range

-20 to 100 °C

### Viscosity Range

10 ~ 380 mm<sup>2</sup>/s

## Applications

### Main Application Areas

Loader • Bulldozer • Agricultural Machinery • Material Handling • Compactor • Forestry Machinery • Container Crane

## Physical Characteristics

### Product Mass

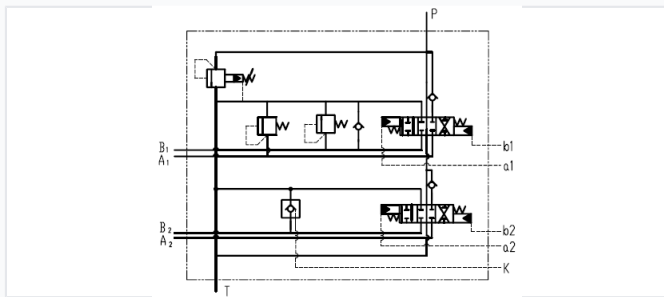
Model	Weight (kg)
D32	62
D32A	95

## Design Features

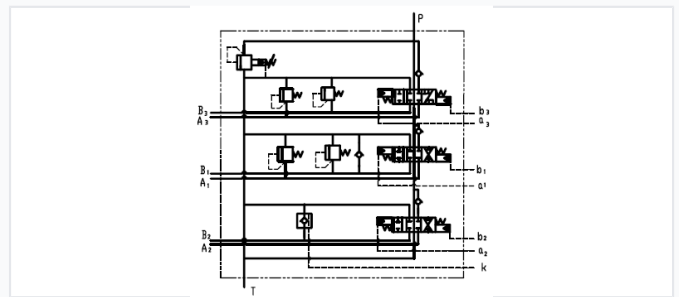
### Built-in Components

- Main safety valve
- Overload valve
- Charge valve
- Check valve
- Plug-in structure for easy maintenance

## Hydraulic Schematics



Hydraulic system schematic for the D32 standard model.



Hydraulic system schematic for the D32A model variant.

### Configuration Note

Standard product schematic; relief valve number and pressure can be user-selected.