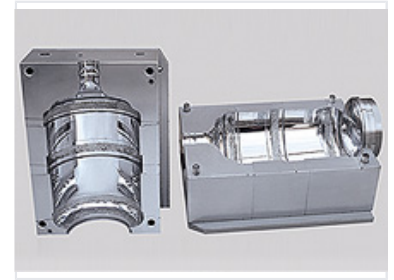


# Injection Molding Machine

Injection molding is a manufacturing process where molten material is injected into a mold to produce parts. It is commonly used with materials like metals, glasses, and polymers.



## Overview

### Injection Molding Machine

This injection molding machine is a specialized piece of plastic machinery designed for the efficient production of complex parts. By heating and injecting molten polymers into precision-machined molds, it enables the creation of high-quality components ranging from small intricate pieces to large automotive body panels. This versatile manufacturing solution supports a wide range of materials, including thermoplastics and thermosetting polymers, making it an essential asset for modern industrial production.

## Technical Capabilities

### Application Scope

- Small precision components
- Large automotive body panels
- Industrial parts manufacturing

### Manufacturing Process

Material is fed into a heated barrel, mixed, and injected into a mold cavity, where it cools and hardens to the configuration of the cavity.

### Compatible Materials

Thermoplastic Polymers, Thermosetting Polymers, Metals, Glasses, Elastomers, Confections