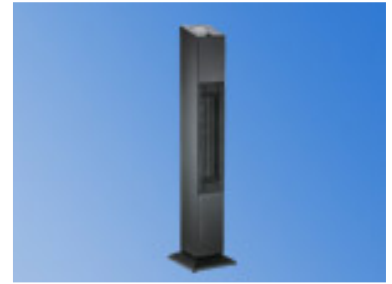


# Infrared Tower Heater for Indoor Use

This infrared tower heater is designed for indoor use, providing efficient and directional heating. Its tower design maximizes heat distribution while maintaining a small footprint.



## Overview

### Efficient Indoor Heating

The Infrared Tower Heater is a space heating apparatus designed for indoor use, utilizing advanced infrared technology to provide efficient and directional warmth. Its tower design ensures a small footprint while maximizing heat distribution throughout the room. Built with safety and convenience in mind, it features adjustable thermostat settings, multiple power levels, and essential safety mechanisms like overheat protection and tip-over shutoff.

## Technical Specifications

Voltage	120 V
Frequency	60 Hz
Power Output	1500 W
Heating Element	Quartz infrared tubes

## Physical Dimensions

### Dimensions

**10 inches**

Width

**10 inches**

Depth

**30 inches**

Height

Weight

8 lbs

## Features & Safety

### Key Features

- Adjustable thermostat
- Multiple power levels
- Directional heating technology
- Space-saving tower design

Safety Features

Overheat protection, Tip-over shutoff