

Infrared Thermal Imaging Camera

This infrared thermal imaging camera is an efficient and fully equipped system for various applications. Its intuitive handling and user-friendly single-hand operation make it ideal for troubleshooting electrical installations, mechanical components, buildings, process equipment, and HVAC/R equipment.



ADDITIONAL IMAGES



Overview

Professional Thermal Imaging Solution

This high-performance thermal imaging camera is designed for efficient troubleshooting across electrical, mechanical, and HVAC systems. Featuring an intuitive, ergonomic single-hand operation, the device provides clear thermal visualization to identify hidden problems instantly. With multiple resolution options and advanced image modes like MIF and PIP, it offers the flexibility needed for precise building diagnostics and predictive maintenance.

Imaging Performance

Model Specifications

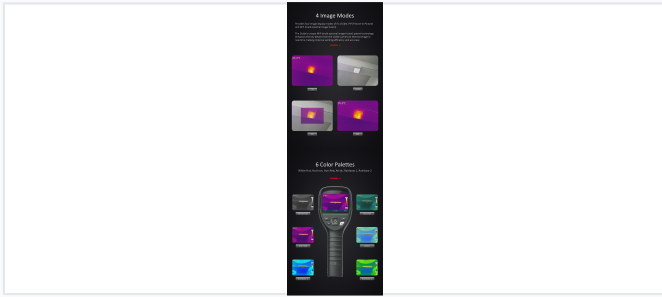
Model	Resolution	FOV
B160V	160x120	30°x22°
B256V	256x192	35°x26°
B320V	320x240	42.5°x32.5°

Focus

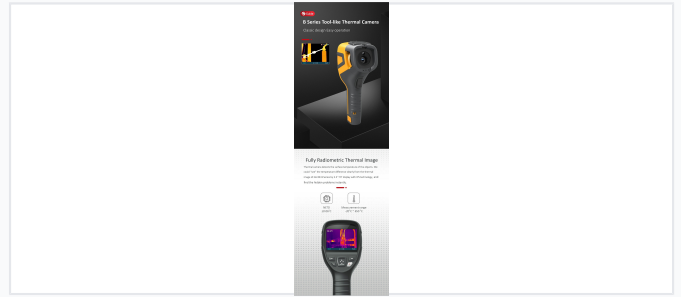
Focus-free

Detector Type	VOx/7.5~14μm
Frame Rate	25Hz/9Hz

Image Presentation



Versatile image display modes including IR, Visible, PIP, and MIF for enhanced detail.



High-quality 3.5" TFT display providing clear thermal visualization and easy operation.

Display	3.5" highlight LCD screen, 320x240 resolution
Image Modes	IR, Visible, MIF, PIP

Measurement

Key Measurement Metrics

650 °C Max Temperature	-20 °C Min Temperature	2 % Accuracy
----------------------------------	----------------------------------	------------------------

Measurement Features

- Center spotmeter
- Area Tmax/Tmin tracking
- Area Tmax/Tmin alarms
- Auto/Semi-automatic/Manual level span

Connectivity & Power

Connectivity	WiFi, Micro USB
Battery Life	4 hours

Environmental & Physical



Rugged construction featuring a rotatable lens cover, slip-proof handle, and drop-tested durability.

Durability Ratings

IP43 • 1m Drop Tested

Physical Dimensions	258mm x 98mm x 90mm
Weight	740 g