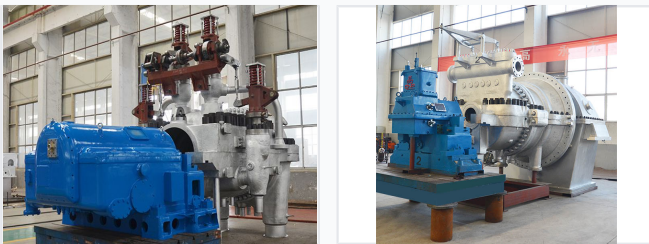


Industrial Steam Turbine

This industrial steam turbine is designed for power generation and driving equipment at a constant speed. It supports a maximum inlet steam pressure of 10.5Mpa and a maximum inlet steam temperature of 535 .



ADDITIONAL IMAGES



Overview

High-Performance Industrial Steam Turbine

This industrial steam turbine is engineered for high-efficiency power generation and mechanical drive applications in demanding environments. Featuring advanced multi-stage design, it supports capacities up to 200MW and high-temperature operation. The system offers versatile integration, including non-adjustable extraction and make-up steam options, making it ideal for geothermic and industrial power plants.

Performance Metrics

Operating Capacity & Efficiency

200 MW

Maximum Capacity

85 %

Thermal Efficiency

Operational Limits

Maximum Inlet Pressure	10.5 Mpa
Maximum Inlet Temperature	535

System Features

Technical Configuration

- Non-adjustable extraction steam outlet
- Non-adjustable make-up steam inlet
- Water or air-cooled exhaust
- Constant speed operation

Applications

Power Generating, Mechanical Drive, Geothermic Power

Support & Services

Service Options

Customization Service • Remote Monitoring • Remote Diagnose