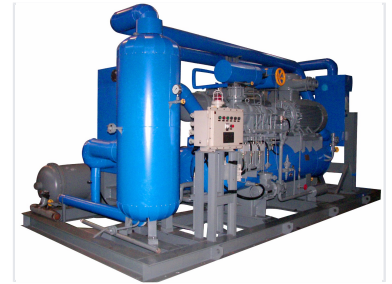


Industrial Screw Compressor Unit

This screw compressor unit delivers compressed air with a maximum shaft power of 5000kW and a maximum discharge pressure of 5Mpa. It can be driven by an electric motor, diesel engine, or natural gas engine.



ADDITIONAL IMAGES



Product Overview

KEY PRODUCT FEATURES

- Design and manufacturing in accordance with API619 standard and specification;
- Suitable for low suction pressure working conditions even negative suction pressure;
- Continual and stable compression, little vibration, working smoothly at high rotation speed;
- Less consumables, low maintenance cost, and trouble-free operation all year round;
- Variable pressure ratio design, suitable for different working conditions;
- Compressor can be mounted on a truck or a trailer to meet mobile working requirements;
- Energy saving under lower load conditions with slide valve structure;

Key design features including API619 compliance and energy-saving slide valve structure.

Industrial Screw Compressor System

This industrial screw compressor unit is designed to provide high-performance, stable compression for demanding environments. Compliant with API619 standards, it offers versatile operational capabilities including low and negative suction pressure support. The system is engineered for longevity and minimal maintenance, featuring advanced slide valve technology for significant energy savings during variable load conditions.

Performance Metrics

TECHNICAL PARAMETERS

Range of pressure	Max. discharge pressure 5MPa
Range of power	Max. 5000kW
Range of capacity	Max.38×10 ³ Nm ³ /d
Range of rotating speed	Range of rotating speed Max. 3600rpm
Driving method	Engines / Motors / Diesels
Cooling method	Air cooling/ water cooling
Applications	Gas boosting, refrigeration, gas transmission, fuel gas boosting, and gas recycling, VRU
Driver brand	Motor: ABB/ SIEMENS/ Nanyang explosion-proof/ JiaMusu Engine: Caterpillar/ Waukesha

Summary of critical performance parameters and application versatility.

Key Operating Metrics

5000 kW

Max Shaft Power

5 MPa

Max Discharge Pressure

3600 rpm

Max Rotating Speed

Technical Specifications

Cooling Options

- Air cooling
- Water cooling

Compatible Driver Brands

Component Type	Supported Brands
Motor	ABB, SIEMENS, Nanyang, JiaMusu
Engine	Caterpillar, Waukesha

Driving Methods

Electric Motor, Diesel Engine, Natural Gas Engine

Applications

Industry Applications

Gas Boosting, Refrigeration, Gas Transmission, Fuel Gas Boosting, Gas Recycling, VRU