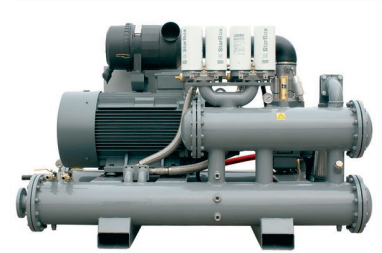


Industrial Rolling Mill

This rolling mill is designed for precision metal forming. It features a powerful motor, efficient cooling system, and durable construction for demanding industrial applications.



Overview

Industrial Rolling Mill KG110W-8

The KG110W-8 is a robust rolling mill engineered for precision metal forming in demanding industrial environments. It features a powerful motor combined with an efficient cooling system to ensure consistent output and long-term operational reliability. Designed for ease of maintenance, this unit incorporates advanced control systems to deliver accurate material processing for professional applications.

Technical Specifications

| | |
|--------------|---|
| Model Number | KG110W-8 |
| Key Features | Precision Metal Forming, Advanced Control System, High-Efficiency Cooling, Industrial Grade |

Performance

Performance Metrics

1 High

Precision Level

1 Low

Maintenance Requirement

Design & Build

Construction Quality

Durable Construction • Industrial Reliability