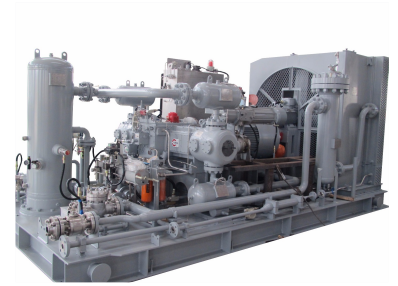


Industrial Reciprocating Compressor Unit

This industrial reciprocating compressor unit is designed for high-pressure gas compression. It can be driven by an electric motor, diesel engine, or natural gas engine.



ADDITIONAL IMAGES



Overview

Industrial Reciprocating Compressor Unit

This industrial-grade reciprocating compressor unit is engineered for long-term reliability with an annual running capacity of up to 8,000 hours and a 25-year service life. Designed to meet strict international standards, it offers high versatility in driving modes and operational environments, including extreme cold or high-heat conditions. With fully automatic control capabilities, the unit supports autonomous operation for enhanced facility efficiency.

Performance Specifications

PRODUCT SERIES

➤ Reciprocating compressor unit

Max. shaft power: 7350kW

Suction pressure > 0.07MPa, discharge pressure < 70MPa

Driving mode: electric motor driven, diesel driven or natural gas engine driven

Technical overview of power ratings and pressure operating ranges.

Maximum Shaft Power

7350 kW

Max Shaft Power

Pressure Specifications

Parameter	Range
Suction Pressure	> 0.07 MPa
Discharge Pressure	< 70 MPa

Operational Details

Cooling Methods

Air Cooling • Water Cooling

Driving Modes

Electric Motor, Diesel Engine, Natural Gas Engine

Compliance and Standards

Design Standards

- ISO 13631
- API 618

Applications

Suitable Applications

- Gas Injection
- Gas Gathering
- Gas Lifting
- Gas Storage
- Gas Boosting
- Gas Transmission
- LNG Stations