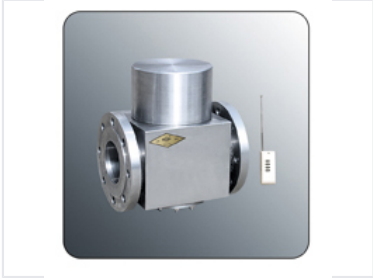


# Industrial Pipeline Gate Valve

This gate valve is designed for controlling the flow of fluids in pipelines. It features a robust metal construction with flanged connections for secure installation in various industrial applications.



## Product Overview

### Industrial Pipeline Gate Valve

This industrial gate valve is engineered for precise flow control in demanding pipeline environments. Built with robust metal construction and featuring reliable flanged connections, it ensures a secure and leak-resistant installation. It is an ideal solution for various industrial applications where consistent and durable fluid management is required.

## Technical Specifications

### Design Features

- Robust construction
- Secure flanged connections
- Reliable flow regulation

Connection Type	Flanged
Construction Material	Metal
Application Suitability	Industrial Pipeline, Fluid Control