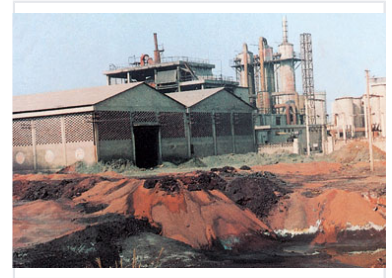


Industrial Packaging Machinery

Industrial packaging machinery automates the process of enclosing products for distribution. These machines enhance efficiency and productivity in various industrial environments.



Overview

Industrial Packaging Solution

This industrial packaging machinery is designed for heavy-duty processing environments, integrating seamlessly into large-scale production facilities. Built with durable concrete and metal infrastructure, the system is engineered to handle rigorous packaging demands with efficiency and reliability. It supports complex manufacturing workflows, ensuring consistent output and structural integrity for industrial-grade operations.

Operational Capabilities

System Design

- Integrated piping and ventilation systems
- Reinforced metal and concrete construction
- Scalable processing architecture

Primary Application

Heavy Industry, Manufacturing, Bulk Processing