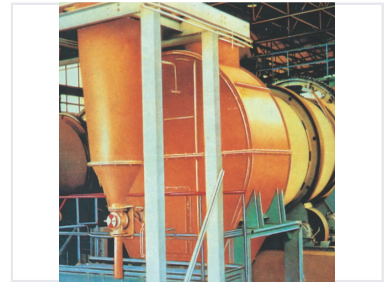


Industrial Material Drying Machine

This industrial drying machine is designed with a large cylindrical drum and conical hopper. It features a robust steel framework and a controlled valve mechanism for material discharge.



Overview

High-Capacity Industrial Drying Solution

This industrial material drying machine is engineered for heavy-duty applications, featuring a robust cylindrical drum and a dedicated conical hopper for efficient processing. The segmented drum design and integrated framework ensure stability during high-volume operations. Equipped with a precision valve mechanism, it allows for controlled material discharge, making it an essential component for streamlined industrial workflows.

Design & Construction

Structural Design

- Large cylindrical rotating drum
- Integrated conical hopper
- Heavy-duty steel beam support framework
- Segmented drum construction

Material Handling

Discharge Mechanism

Precision valve mechanism for controlled material flow

Technical Characteristics

Primary Material

Industrial Grade Metal • Reinforced Steel

Application Type

Heavy-Duty, Industrial Drying, Bulk Material Processing