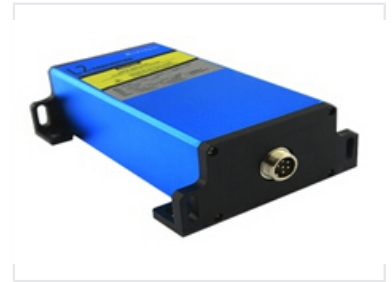


Industrial Laser Distance Measurement Sensor

This high-precision laser distance measurement sensor is designed for industrial applications. The sensor provides accurate and reliable distance measurements using laser technology and features a compact, rugged design for easy integration.



Product Overview

High-Performance Laser Distance Sensor

The L2 industrial laser distance sensor is engineered for precision and reliability in demanding automation environments. Utilizing advanced phase-shift measuring technology, it delivers rapid distance readings in just 0.05 seconds, making it ideal for proximity, mid, and long-range applications. Its compact and lightweight design ensures seamless integration into existing industrial systems, providing a cost-effective solution for process control and robotics.

Performance Metrics

Maximum Range

60 m

Max Distance

Measurement Speed

0.05 sec

Technical Specifications

Technology

Phase-shift measuring

Communication Interfaces

RS232, RS485

Design & Integration

Design Features

- Compact form factor
- Lightweight construction
- Easy system integration

Ideal Applications

Automation • Robotics • Process Control