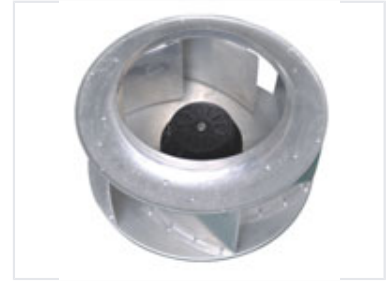


Industrial Impeller with Curved Blades

This impeller is designed for moving air or fluids in industrial systems. Its robust construction features curved blades enclosed in a circular housing, making it suitable for various machinery applications.



Product Overview

Industrial Impeller Features

This industrial impeller is engineered for high-performance fluid and air movement within machinery. It features a robust construction and a precise arrangement of curved blades enclosed in a circular housing. Designed for reliability, this component ensures efficient flow control in demanding industrial environments.

Technical Specifications

Blade Design	Curved blades
Construction	Robust housing with internal blade arrangement

Application Data

Efficiency

1 Curved
Design Type

Primary Applications	Air movement, Fluid handling, Machinery integration
----------------------	---