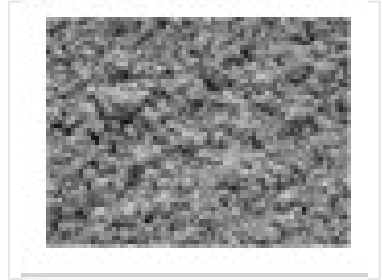


Industrial Heat Exchanger Component

Component designed for use in industrial heat exchangers. Its rough, textured surface maximizes thermal conductivity.



Overview

Industrial Heat Exchanger Component

This industrial heat exchanger component is engineered to optimize thermal efficiency in demanding heating applications. Featuring a specialized, high-surface-area textured surface, the material is designed to maximize heat transfer rates and improve overall system dissipation. Its robust construction ensures reliability and performance in professional industrial environments.

Material Properties

| | |
|-------------------------|--------------------------------------------------------------------|
| Surface Characteristics | High-surface-area, irregular granular texture |
| Primary Function | Thermal Conductivity, Heat Dissipation, Heat Transfer Optimization |

Performance Metrics

Performance Features

1 High

Surface Area Efficiency

1 Optimized

Thermal Conductivity