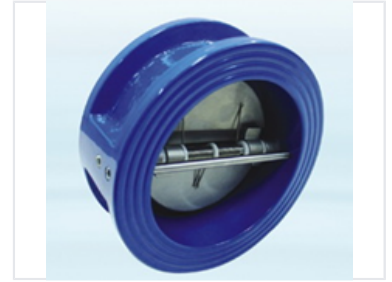


Industrial Gate Valve

This industrial gate valve is designed for controlling fluid flow in pipelines. It features flanged connections for secure installation and reliable shut-off.



ADDITIONAL IMAGES



Product Overview

Industrial Gate Valve Series

This robust industrial gate valve is engineered for precise fluid control in demanding pipeline environments. Featuring a durable cast iron body and secure flanged connections, it ensures reliable shut-off for water, oil, and gas applications. The manual handwheel operation combined with a secure bonnet seal provides operators with consistent performance and longevity in industrial settings.

Technical Specifications

Nominal Diameter (DN)	150 mm
Pressure Rating (PN)	16 bar
Construction Material	Cast Iron, Steel
Connection Type	Flanged

Operating Features

Operational Highlights

- Manual handwheel control
- Secure bonnet sealing
- Durable industrial-grade body
- Compatible with water, oil, and gas