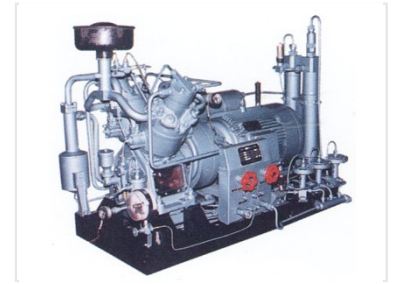


Industrial Gas Compressor

This heavy-duty gas compressor is designed for industrial applications. The unit features a robust construction with multiple cylinders and intricate piping for efficient gas compression.



Overview

Industrial-Grade Compression Solution

This heavy-duty gas compressor is engineered for demanding industrial environments requiring reliable and efficient gas processing. Built upon a robust base for vibration reduction and stability, the unit integrates a high-performance electric motor with precision control valves. It features a multi-cylinder architecture and complex piping systems designed to maintain optimal pressure levels under continuous operational loads.

Performance Metrics

System Capabilities

1 Electric

Motor Configuration

1 Multi-stage

Cylinder Design

Technical Details

Included Components

- Electric drive motor
- Multi-cylinder compressor block
- Industrial-grade piping network
- Pressure monitoring gauges
- Operational control valves
- Stability mounting base

Construction Features

Heavy-duty construction, Vibration-dampened base, Integrated pressure monitoring, High-precision control valves