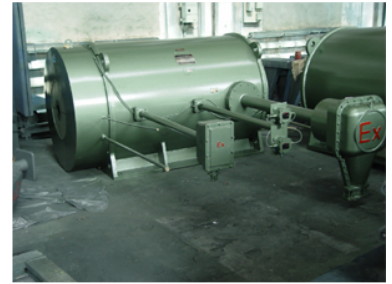


# Industrial Explosion-Proof Elevator

This heavy-duty industrial elevator features a cylindrical housing and support structures. It includes an explosion-proof (Ex) rated gearbox for safe operation in hazardous environments.



## Overview

### Industrial Explosion-Proof Elevator

This heavy-duty industrial elevator is engineered for safe and reliable operation in hazardous environments. Featuring a robust cylindrical housing and a specialized explosion-proof (Ex) rated gearbox, it is built to withstand demanding industrial and agricultural conditions. Its design prioritizes durability and safety, making it an essential component for vertical transport in sensitive or volatile operational areas.

## Technical Specifications

### Safety Compliance

Ex-Rated • Explosion-Proof

### Construction Details

- Cylindrical main housing
- Reinforced support structures
- Heavy-duty support rods
- Explosion-proof gearbox
- Integrated junction box

### Suitable Environments

Industrial, Agricultural, Hazardous Areas