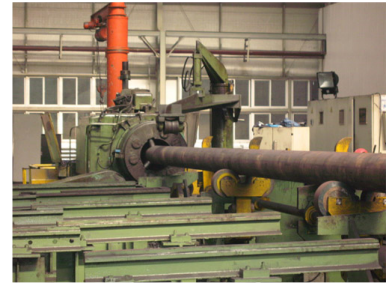


Industrial Chemical Processing Machinery

This heavy-duty industrial machinery is designed for chemical processing applications. It features a complex system for material handling and precise processing, suitable for chemical plants and industrial manufacturing environments.



Overview

Industrial Chemical Processing Machinery

This heavy-duty machinery is engineered specifically for demanding chemical processing applications. It features a robust design centered around a large cylindrical processing unit and an integrated orange exhaust stack. Equipped with a complex system of rollers and supports, it is optimized for heavy material handling and precise processing within industrial manufacturing environments.

Technical Features

Key Components

- Large cylindrical processing unit
- Orange exhaust stack
- Complex roller system
- Support structure for cylindrical materials
- Robust control panel

Design Focus

Heavy-duty • Precision Processing

Application

Suitable Environments

Chemical Plants, Industrial Manufacturing, Heavy Material Handling